

Revisions:

1 ADDENDUM NO. 01 07/05/ 2018

Issued: 05, June 2018  
ISSUED FOR PERMIT



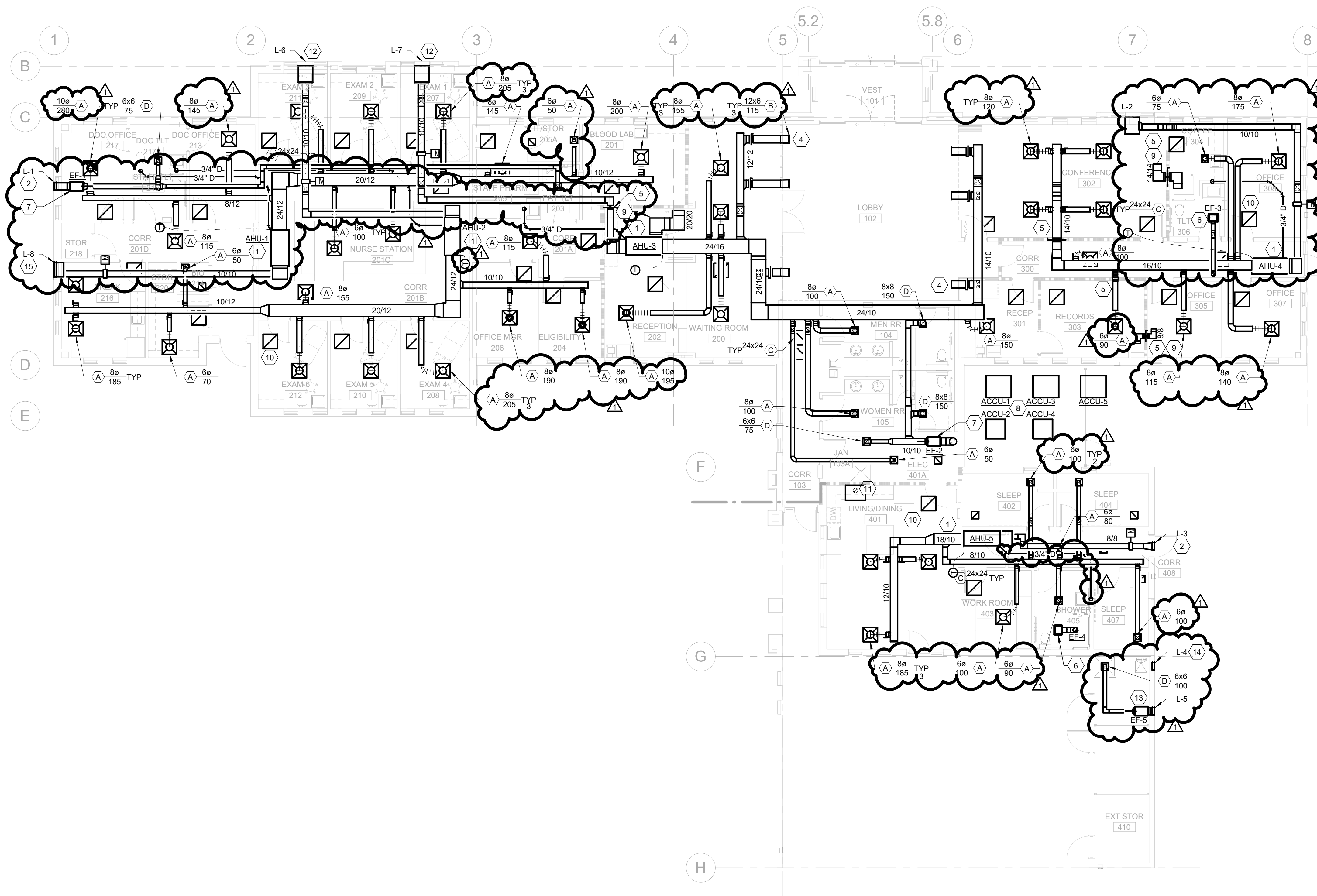
9575 KATY FREEWAY SUITE 200  
HOUSTON, TX 77024  
P: 713.722.7071  
F: 713.722.7072

CONSULTANTS:

<b>PROJECT NAME:</b>	<b>BURLESON COUNTY HOSPITAL DISTRICT</b>
<b>PROJECT ADDRESS:</b>	17184 State Highway 36 S. Somerville, TX 77879
<b>CLINIC, RESOURCE AND EMS</b>	
<b>PROJECT NUMBER:</b>	17011
<b>SHEET NAME:</b>	<b>MECHANICAL FLOOR PLAN</b>
<b>SHEET NUMBER</b>	<b>M-1.21</b>

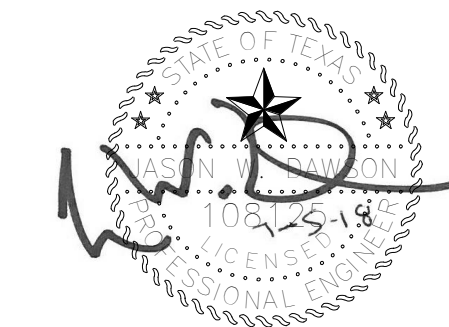
**KEYED NOTES**

- NEW AIR HANDLING UNIT AHU-# LOCATED IN ATTIC SPACE. PROVIDE FULL SIZE RETURN AIR PLENUM WITH UPWARD FACING OPENING. SIZE RETURN TO PREVENT LINE OF SIGHT INTO UNIT. CONTRACTOR TO CONFIRM RETURN AIR PATH TO UNIT FROM ALL SPACES SERVED. PROVIDE 3/4" CONDENSATE DRAIN TO NEAREST LAVATORY AND CONNECT INTO TAILPIECE WITH AIR GAP FITTING.
- PROVIDE NEW EXHAUST AIR LOUVER L-#. COORDINATE FINAL LOCATION AND COLOR WITH ARCHITECT. REFER TO SCHEDULE.
- NEW OUTSIDE AIR DUCT DOWN FROM OUTSIDE AIR INTAKE OAI-1. CONNECT OUTSIDE AIR DUCTWORK INTO RETURN PLENUM OF AIR HANDLING UNIT. PROVIDE MOTORIZED DAMPER INTERLOCKED WITH UNIT CONTROLS.
- PROVIDE NEW SIDE WALL SUPPLY AIR GRILLE SERVING LOBBY SPACE. ALL GRILLES SERVING LOBBY TO HAVE MANUAL BALANCING DAMPER IN ACCESSIBLE LOCATION. GRILLE TO BE MOUNTED AT APPROXIMATELY 11FT AFF. COORDINATE FINAL LOCATION AND FINISH WITH ARCHITECT.
- PROVIDE NEW FIRE DAMPER IN DUCTWORK PENETRATING 1HR RATED WALL.
- NEW CEILING MOUNTED EXHAUST FAN EF-#. FAN CONTROLS TO BE INTERLOCKED WITH LIGHTING CONTROLS. REFER TO SCHEDULE.
- NEW IN-LINE EXHAUST FAN EF-#. EXHAUST FAN TO BE INTERLOCKED WITH LIGHTING CONTROLS IN SPACES SERVED BY FAN. REFER TO SCHEDULE AND DETAIL.
- AIR COOLED CONDENSING UNITS IN MECHANICAL YARD. INSTALL PER MANUFACTURER RECOMMENDATIONS AND MAINTAIN ALL SUGGESTED CLEARANCES. COORDINATE FINAL LOCATIONS WITH ARCHITECT AND OWNER.
- PROVIDE NEW Z-TRANSFER DUCT THRU WALL TO STRUCTURE. SIZED AS NOTED.
- PROVIDE NEW RETURN DIFFUSER WITH FULL SIZE SOUND BOOT. TYPICAL OF ALL.
- PROVIDE 8" DIAMETER STRAIGHT KITCHEN EXHAUST DUCT UP TO THE ROOF. PROVIDE WITH ROOF CAP. REFER TO THE MANUFACTURER INSTALLATION INSTRUCTION.
- NEW LOUVER L-#. ROUND STYLE ARCHITECTURAL LOUVER LOCATED IN DORMER. CONNECT TO ASSOCIATED AIR HANDLING UNIT VIA RETURN AIR PLENUM AS INDICATED. PROVIDE MOTORIZED DAMPER TO BE INTERLOCKED WITH UNIT CONTROLS AND BALANCED PER SCHEDULE.
- NEW EXHAUST FAN EF-5 TO BE INTERLOCKED WITH LIGHTING IN STORAGE AREA. MOUNT EXHAUST GRILLE DIRECTLY ABOVE MOP SERVICE BASIN.
- PROVIDE NEW LOUVER L-1 IN EXTERIOR WALL OF STORAGE AREA. LOUVER TO PROVIDE TRANSFER AIR WHILE EXHAUST FAN IS RUNNING. REFER TO SCHEDULE.
- NEW OUTSIDE AIR LOUVER L-#. CONNECT DUCTWORK TO RETURN PLENUM OF AIR HANDLER AS INDICATED. PROVIDE MOTORIZED DAMPER TO BE INTERLOCKED WITH UNIT CONTROLS AND BALANCED PER SCHEDULE.



C:\Users\Walter\_Kreider\Documents\181013\_MP2\_B16\_Mech\_Kreider.dwg

Engineer:



### KEYED NOTES

- 1 PROVIDE NEW THERMOSTAT TO CONTROL UNIT ASSOCIATED WITH ZONE. THERMOSTAT TO BE MOUNTED AT 5FT AFF. COORDINATE FINAL LOCATION WITH ARCHITECT.

Revisions:

1 ADDENDUM NO. 01 07/05/ 2018

Issued: 05, June 2018  
ISSUED FOR PERMIT



## HARRELL

ARCHITECTS, LP

9575 KATY FREEWAY SUITE 200  
HOUSTON, TX 77024

P: 713.722.7071

F: 713.722.7072

CONSULTANTS:

PROJECT NAME:

### BURLESON COUNTY HOSPITAL DISTRICT

PROJECT ADDRESS:

17184 State Highway 36 S.  
Somerville, TX 77879

CLINIC, RESOURCE AND EMS

PROJECT NUMBER:

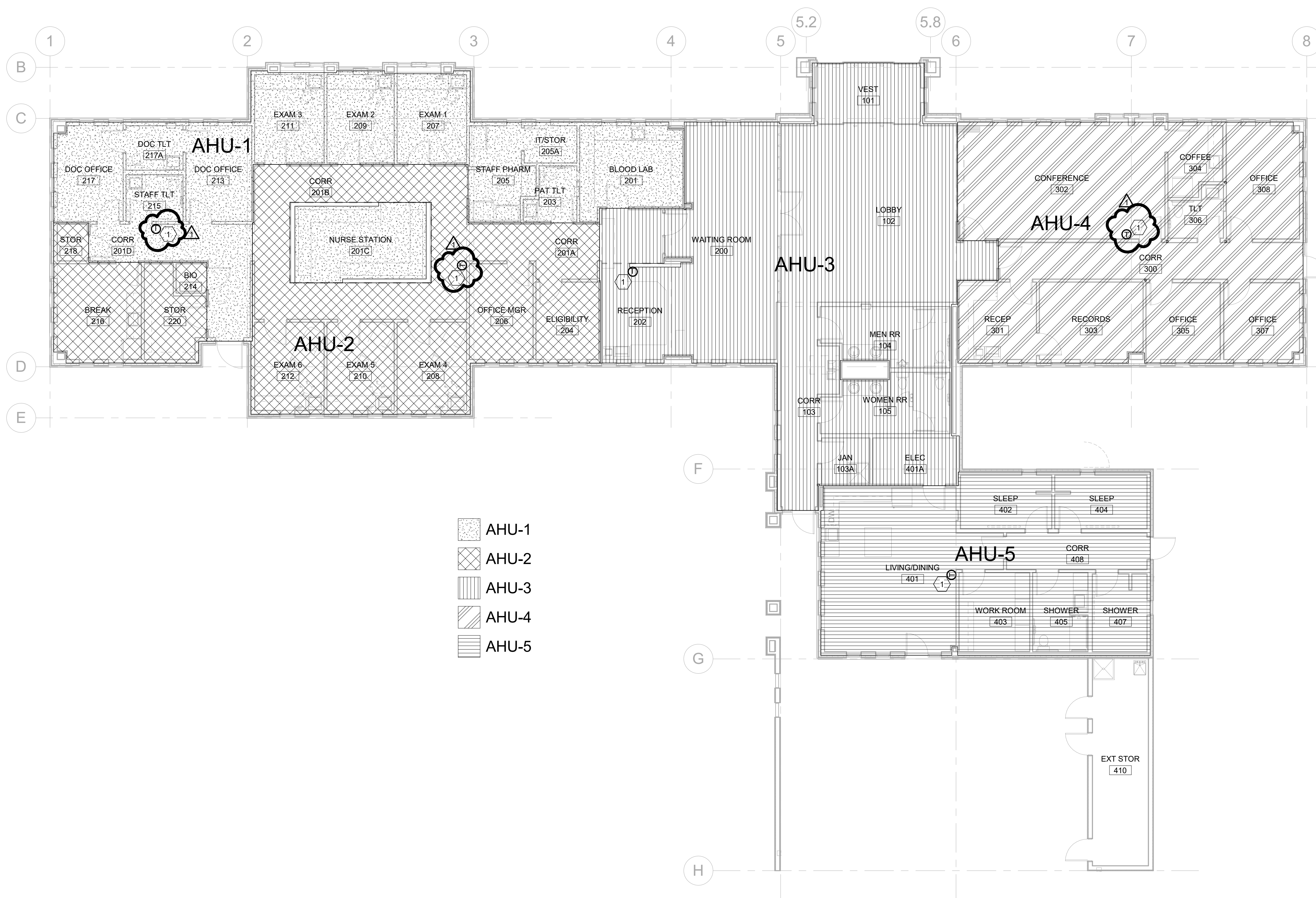
17011

SHEET NAME:

MECHANICAL ZONING PLAN

SHEET NUMBER

# M-1.22



- AHU-1
- AHU-2
- AHU-3
- AHU-4
- AHU-5

C:\Users\Walter.Kreder\Documents\181013\_MP2\_BUR\_HOSP\_Kreder.dwg

**KEYED NOTES**

- 1 EXHAUST DUCT FROM EXHAUST FAN BELOW THRU ROOF. TERMINATE DUCTWORK WITH WEATHER CAP. COORDINATE LOCATION WITH ARCHITECT.

Engineer:



Revisions:

1 ADDENDUM NO. 01 07/05/ 2018

Issued: 05, June 2018  
ISSUED FOR PERMIT



9575 KATY FREEWAY SUITE 200  
HOUSTON, TX 77024  
P: 713.722.7071  
F: 713.722.7072

CONSULTANTS:

PROJECT NAME:

**BURLESON  
COUNTY  
HOSPITAL  
DISTRICT**

PROJECT ADDRESS:

17184 State Highway 36 S.  
Somerville, TX 77879

CLINIC, RESOURCE AND EMS

PROJECT NUMBER:

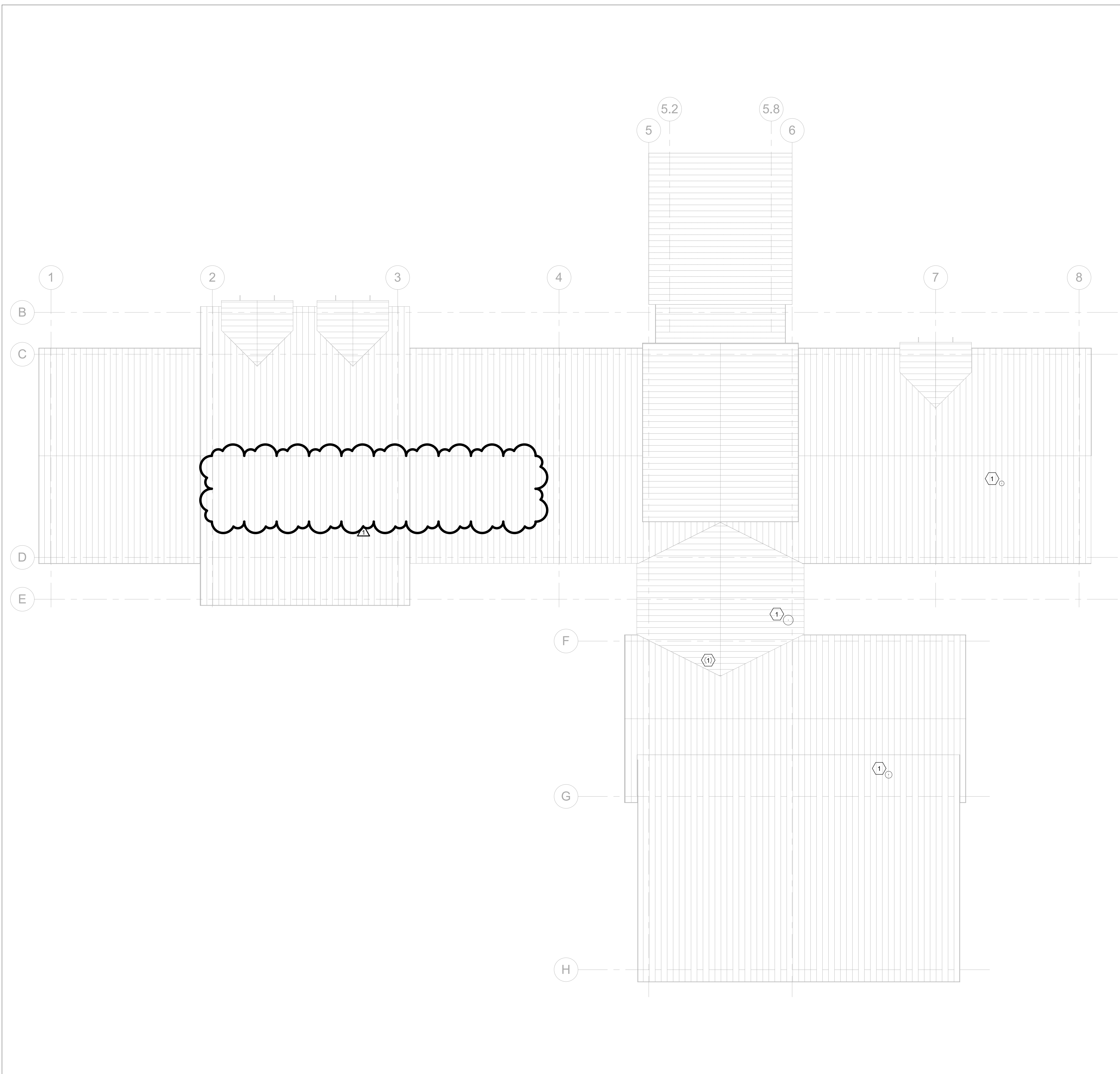
17011

SHEET NAME:

**MECHANICAL ROOF PLAN**

SHEET NUMBER

**M-1.23**



## LOUVER SCHEDULE

MARK	SERVICE	CFM	WIDTH (INCHES)	HEIGHT (INCHES)	VELOCITY (FPM)	FREE AREA (SF) (57%)	MANUFACTURER
L-1	RR EXHAUST	225	12	12	726	0.31	RUSKIN - ELF6375DK
L-2	AHU-4 OSA	290	24	24	193	1.50	RUSKIN - ELR
L-3	AHU-5 OSA	150	12	12	484	0.31	RUSKIN - ELF6375DX
L-4	STORAGE OSA	100	12	12	323	0.31	RUSKIN - ELF6375DK
L-5	STORAGE EXH	100	12	12	323	0.31	RUSKIN - ELF6375DK
L-6	AHU-2 OSA	280	36	36	58	4.80	RUSKIN - ELR
L-7	AHU-3 OSA	270	36	36	56	4.80	RUSKIN - ELR
L-8	AHU-1 OSA	280	24	12	418	0.67	RUSKIN - ELF6375DK

- VERIFY FINAL COLOR / FINISH WITH ARCHITECT FOR ALL LOUVERS.
- ALL LOUVERS TO BE STATIONARY TYPE.
- ALL LOUVERS TO BE OF ALUMINUM MATERIAL.
- PROVIDE DAMPERS AS INDICATED.
- L-2, 6, 7 TO BE ROUND TYPE. PROVIDE 12" DEEP PLENUM OFF BACK OF LOUVER. CONNECT OUTSIDE AIR DUCTWORK AS INDICATED ON PLANS.

## DX SPLIT UNIT SCHEDULE

MARK	DX COOLING COIL							SUPPLY FAN		UNIT VOLTS PHASE	UNIT MCA	UNIT MOCOP	HEAT VOLT / PHASE	HEAT MCA	HEAT MOCOP	ELECTRIC HEAT (KW)	WEIGHT LBS.	REFRIG.	MANUFACTURER
	SUPPLY CFM	OA CFM	ENTERING AIR TEMP DB / WB	LEAVING AIR TEMP DB / WB	OUTSIDE AIR TEMP	TOTAL BTUH	SENSIBLE BTUH	HP	E.S.P.										
AHU-1	1750	280	78.8 / 65.8	57.3 / 55.1	98 / 80	55556	40129	0.75	0.5	208 / 1	8	15	460 / 3	25.6	30	14.4	145	R-410A	TRANE TEM4AC60S51
AHU-2	1750	280	78.5 / 65.7	57.2 / 55.0	98 / 80	55465	39787	0.75	0.5	208 / 1	8	15	460 / 3	25.6	30	14.4	145	R-410A	TRANE TEM4AC60S51
AHU-3	1750	270	78.5 / 65.6	57.1 / 54.9	98 / 80	55374	39976	0.75	0.5	208 / 1	8	15	460 / 3	25.6	30	14.4	145	R-410A	TRANE TEM4AC60S51
AHU-4	1175	275	78.4 / 65.3	57.5 / 55.6	98 / 80	33851	26237	0.5	0.5	208 / 1	3	15	460 / 3	15.4	20	7.7	145	R-410A	TRANE TEM4AC36S41
AHU-5	1050	270	78.2 / 65.5	56.6 / 54.7	98 / 80	33393	24228	0.5	0.5	208 / 1	3	15	460 / 3	15.4	20	7.7	145	R-410A	TRANE TEM4AC36S41

- \* WEIGHTS ARE APPROXIMATE AND MAY VARY FROM MANUFACTURER TO MANUFACTURER.
- ROOM CONDITIONS: COOLING 75 F, 55% RH HEATING 70F
  - PROVIDE UNITS WITH CONDENSATE FLOAT SWITCH IN THE SECONDARY DRAIN PAN TO DEACTIVATE THE UNIT IN EVENT OF A SECONDARY DRAIN PAN OVERFLOW.
  - INSTALL MERV 8 FILTERS IN ALL UNITS. FILTERS TO BE STAMPED WITH MERV RATING.
  - PROVIDE UNIT WITH APR RAWAL DEVICES FOR CAPACITY CONTROL.
  - PROVIDE THERMOSTAT WITH HUMIDITY AND 7-DAY PROGRAMMABLE CONTROLS AND WI-FI CONNECTIVITY ABILITY. EQUIPMENT CONTROLS TO APPROVED BY OWNER PRIOR TO INSTALLATION.
  - HINGED ACCESS DOORS - FAC
  - PROVIDE ELECTRIC HEAT ACCESSORY PER HEATING KW.
  - PHASE MONITOR - FAC
  - MULTI-STAGE AIR VOLUME - FAC
  - PROVIDE BACNET MODULE.
  - COORDINATE WEIGHT AND LOCATION WITH STRUCTURE.
  - PROVIDE ADD ON ELECTRIC HEAT, KW SIZED AS NOTED, WITH SINGLE POINT OF 460/3 ELECTRICAL CONNECTION. HEATER TO BE WEM-A SERIES.

## AIR COOLED CONDENSING UNIT SCHEDULE

MARK	CAPACITY COOLING BTUH	AMBIENT HEAT	TOTAL SYSTEM EER/SEER	VOLT PHASE	MCA	MOCOP	WEIGHT (LBS)	MANUFACTURER
ACCU-1	58000	100	13.5 SEER	460 / 3	10	15	261	TRANE 4TTA3060
ACCU-2	58000	100	13.5 SEER	460 / 3	10	15	261	TRANE 4TTA3060
ACCU-3	58000	100	13.5 SEER	460 / 3	10	15	261	TRANE 4TTA3060
ACCU-4	36000	100	13.5 SEER	460 / 3	7	15	229	TRANE 4TTA3036
ACCU-5	36000	100	13.5 SEER	460 / 3	7	15	229	TRANE 4TTA3036

- PROVIDE WITH INTEGRAL MICROPROCESSOR.
- PROVIDE WITH WIRELESS CONTROLS - 24 VAC.
- PROVIDE WITH PRE-CHARGE LINE SETS.
- OUTDOOR UNIT TO BE MOUNTED ON THE GROUND.
- PROVIDE HAIL GUARDS, LIMIT SWITCHES, TIME GUARD RELAY, LIQUID LINE FILTER DRYER.
- PROVIDE UNIT WITH APR RAWAL DEVICES FOR CAPACITY CONTROL.

## FAN SCHEDULE

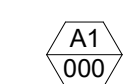
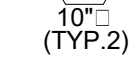
MARK	SERVICE	CFM	STATIC PRESS	FAN RPM	DRIVE TYPE	VOLT PHASE	POWR	MANUFACTURER
EF-1	EXAM AREA RR	225	0.50	-	DIRECT	120 / 1	1/4HP	GREENHECK SQ-97-VG
EF-2	MAIN RR	300	0.50	-	DIRECT	120 / 1	1/2HP	GREENHECK SQ-97-VG
EF-3	OFFICE RR	75	0.25	-	DIRECT	120 / 1	12W	GREENHECK A50-90-VG
EF-4	SHOWER	100	0.50	-	DIRECT	120 / 1	12W	GREENHECK A90-130-VG
EF-5	EXT. STORAGE	100	0.35	-	DIRECT	120 / 1	1/10HP	GREENHECK SQ-65-VG

- ALL FANS TO HAVE DISCONNECT SWITCHES.
- PROVIDE SPEED CONTROLLERS ON ALL DIRECT DRIVE FANS.
- PROVIDE WITH MOTORIZED DAMPERS FOR ALL FANS. MOTORIZED DAMPER SHALL OPEN WHEN UNIT IS ON AND CLOSE WHEN UNIT IS OFF.
- ALL FANS TO BE INTERLOCKED WITH LIGHTING CONTROLS IN AREA SERVED BY FAN.

## AIR DEVICE SCHEDULE

MARK	DESCRIPTION	RADIATION DAMPER	OBD DAMPER	MANUFACTURER: TITUS OR EQUAL
A	CEILING DIFF	NO	NO	OMNI - AA, SQUARE PLAQUE, SEE SHEET FOR SIZE
B	SIDE WALL SA	NO	YES	300FS - DBL. DEFLEC., VERTICAL FRONT, SEE SHEET FOR SIZE
C	RETURN AIR	NO	NO	PAR - AA, PERFORATED FACE, 24X24
D	EXHAUST	NO	YES	350FL, SEE SHEET FOR SIZE

- VERIFY ALL CEILING TYPES WITH ARCHITECTURAL DRAWINGS.
- ALL AIR DEVICES SHALL BE ALUMINUM, UNLESS NOTED.
- SUPPLY RADIATION DAMPERS FOR DEVICES PENETRATING RATED CEILINGS.
- VERIFY FINAL COLOR / FINISH WITH ARCHITECT FOR ALL DIFFUSERS AND GRILLES.

 DIFFUSER/GRILLE MARK  
 CFM  
 NECK SIZE  
 TYPICAL OF QUANTITY

Engineer:



Revisions:

1 ADDENDUM NO. 01 07/05/ 2018

Issued: 05, June 2018  
ISSUED FOR PERMIT



**HARRELL**  
ARCHITECTS, LP

9575 KATY FREEWAY SUITE 200  
HOUSTON, TX 77024

P: 713.722.7071

F: 713.722.7072

CONSULTANTS:

PROJECT NAME:

**BURLESON  
COUNTY  
HOSPITAL  
DISTRICT**

PROJECT ADDRESS:

17184 State Highway 36 S.  
Somerville, TX 77879

CLINIC, RESOURCE AND EMS

PROJECT NUMBER:

17011

SHEET NAME:

**MECHANICAL SCHEDULES**

SHEET NUMBER

**M-6.00**