

DOOR SCHEDULE - FIRST FLOOR AREA F

WT	DOOR PANEL				DOOR FRAME				DETAILS		FIRE RATING LABEL	REMARKS	
	ELEV.	PAIR/SING	W	H	MATL.	ELEV.	W	H	MATL.	JAMB			HEAD
F114A	F	SING	4'-0"	7'-0"	HM	1	4'-3"	7'-2"	ALUM	8/A9.10	7/A9.10		
F114B	F	SING	3'-0"	7'-0"	PLUM	1	3'-4"	7'-4"	HM	2/A9.20	1/A9.20		
F115A	F	SING	3'-0"	6'-8"	HM	1	3'-3"	6'-10"	ALUM	8/A9.10	7/A9.10		
F116A	F	SING	3'-0"	6'-8"	HM	1	3'-3"	6'-10"	ALUM	8/A9.10	7/A9.10		
F117A	F	SING	3'-6"	6'-8"	HM	1	3'-9"	6'-10"	ALUM	8/A9.10	7/A9.10		
F118A	F	SING	3'-0"	7'-0"	PLAM	1	3'-4"	7'-4"	HM	2/A9.20	1/A9.20		
F118A	CCD	N/A	10'-0"	4'-6"	ALUM		10'-4"	4'-10"	ALUM	14/A9.10 & 15/A9.10	13/A9.10		O.H. CHAIN OPERATED DOOR
F119B	CCD	PAIR	6'-0"	4'-6"	ALUM		6'-4"	4'-10"	ALUM	14/A9.10 & 15/A9.10	13/A9.10		O.H. CHAIN OPERATED DOOR
F119C	F	SING	3'-6"	6'-8"	HM	1	3'-9"	6'-10"	ALUM	8/A9.10	1/A9.20		
F120A	F	SING	4'-0"	7'-0"	HM	1	4'-3"	7'-2"	ALUM	8/A9.10	1/A9.20		
F121A	F	SING	3'-0"	6'-8"	HM	1	3'-3"	6'-10"	ALUM	8/A9.10	1/A9.20		
F121A	F	SING	3'-6"	6'-8"	HM	1	3'-9"	6'-10"	ALUM	8/A9.10	1/A9.20		
F122A	F	SING	3'-0"	6'-8"	HM	1	3'-3"	6'-10"	ALUM	8/A9.10	1/A9.20		

- 1 NEW FLOORING, RE: FINISH SCHEDULE AND FINISH PLAN
- 2 NEW WINDOW, RE: WINDOW SCHEDULE
- 3 NEW DOOR & FRAME, RE: DOOR SCHEDULE
- 4 NEW CASEWORK, RE: CASEWORK ELEVATIONS
- 5 STAGE CURTAIN, RE: SPEC.
- 6 MASONRY COLUMNS, TYP.
- 7 FOLDING PARTITION, RE: DOOR SCHEDULE AND SPEC
- 8 KILN, RE: SPECIFICATIONS
- 9 CAFETERIA TABLE, N.I.C.
- 10 NEW MARKER BOARD
- 11 NEW SINK, RE: PLUMBING
- 12 NEW REFRIGERATOR
- 13 OVERHEAD ROLLING GRILLE, RE: DOOR SCHEDULE
- 14 NEW DRINK RAIL
- 15 NEW TROPHY CASES
- 16 NEW COMMERCIAL DRYERS
- 17 NEW COMMERCIAL WASHERS
- 18 FURNITURE, N.I.C.
- 19 NEW BICYCLE
- 20 NEW TAPING TABLE
- 21 NEW ICE BATH
- 22 NEW ICE MACHINE
- 23 NEW MIRROR
- 24 NEW CLASSROOM BED
- 25 CURTAINS
- 26 NEW FACE/EYE WASH STATION
- 27 COUNTERTOP
- 28 NEW FIXED BENCH WITH WOOD TOP
- 29 NEW SMART BOARD
- 30 NEW DOOR AND FRAME AT EXISTING OPENING
- 31 MOP SINK, RE: PLUMBING DRAWINGS
- 32 DOWNSPOUT
- 33 COLUMN FURRING HOLD TIGHT TO COLUMN
- 34 STORAGE RACK, RE: SPEC.
- 35 HEADER ABOVE SHOWN DASH
- 36 4" x 8" x 3/4" PLYWOOD PAINTED AND ATTACHED TO WALL
- 37 NEW COUNTER COILING O.H. GRILLE RE: SCHED. FOR SIZE
- 38 NEW FILL IN WALL TO BE ALIGNED WITH EXISTING
- 39 TRENCH DRAIN, RE: PLUMBING
- 40 FOLDING PARTITION

TOILET ACCESSORIES

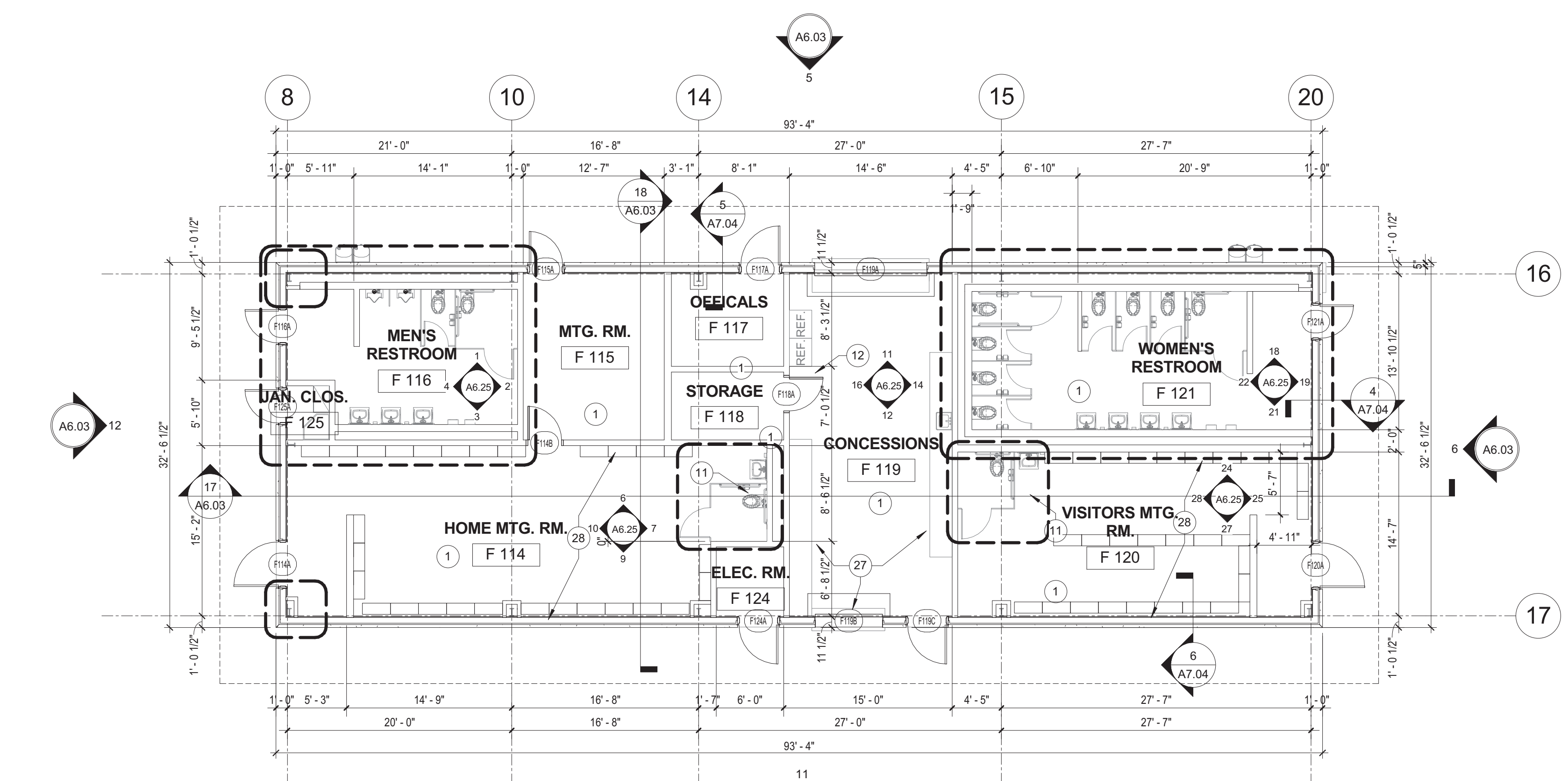
LABEL	DESCRIPTION	REMARKS
TA-1	SOAP DISPENSER	
TA-2	MIRROR	
TA-3	TOILET PAPER DISPENSER	
TA-4		
TA-5	GRAB BARS (AT TYPICAL ACCESSIBLE TOILETS)	
TA-6		
TA-7	SANITARY NAPKIN DISPOSAL	
TA-8		
TA-9	GRAB BARS (AT ACCESSIBLE SHOWERS)	
TA-10	FOLDING SHOWER BENCH	
TA-11	CLOTHES HOOK	NOTE 5
TA-12	SHOWER CURTAIN, ROD AND HOOKS	
TA-13	ELECTRIC HAND DRYER	
TA-14	PAPER TOWEL DISPENSER AND TRASH RECEPTACLE	
TA-15	GRAB BARS (AT AMBULATORY ACCESSIBLE TOILETS)	
TA-16	DIAPER CHANGING STATION	

NOTE: ALL TOILET ACCESSORIES SHALL BE CONTRACTOR FURNISHED AND CONTRACTOR INSTALLED U.N.O.

- COORDINATE FINAL LOCATIONS WITH ARCHITECT PRIOR TO INSTALLATION.
- CONTRACTOR IS TO VERIFY ALL HEIGHTS OF ACCESSORIES TO COMPLY WITH ALL APPLICABLE ACCESSIBILITY REQUIREMENTS.
- REFER TO ALL FINISHES AND COLORS IN FINISH SCHEDULE, VERIFY ALL PATTERNS WITH ARCHITECT.
- ALIGN MIRROR ON CENTER OF LAVATORY
- ONE (1) HOOK SHALL BE INSTALLED INSIDE DOOR AT EACH TOILET PARTITION. ONE HOOK INSIDE DOOR AT SINGLE TOILET ROOMS AND ONE HOOK AT EACH SHOWER

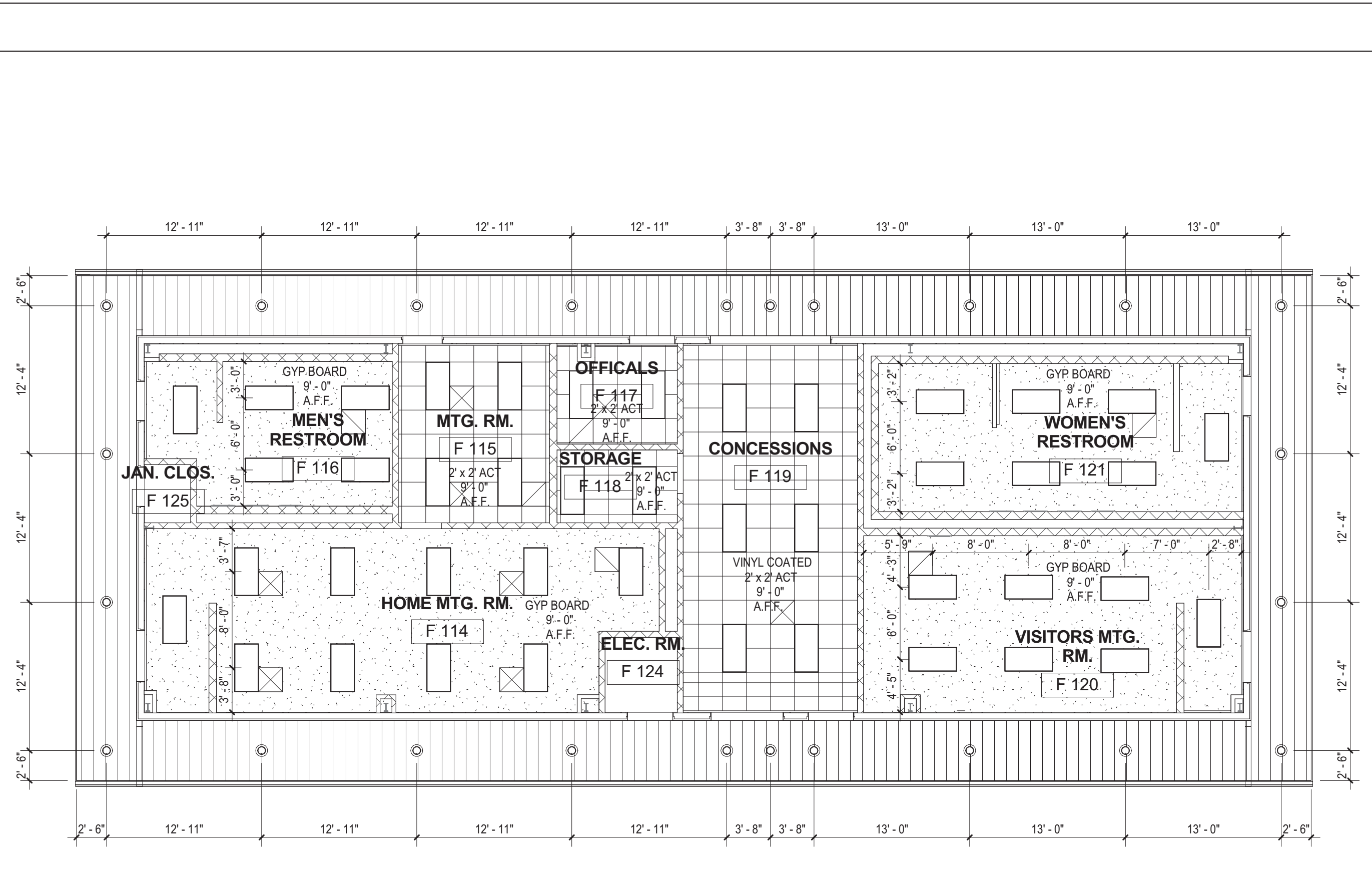
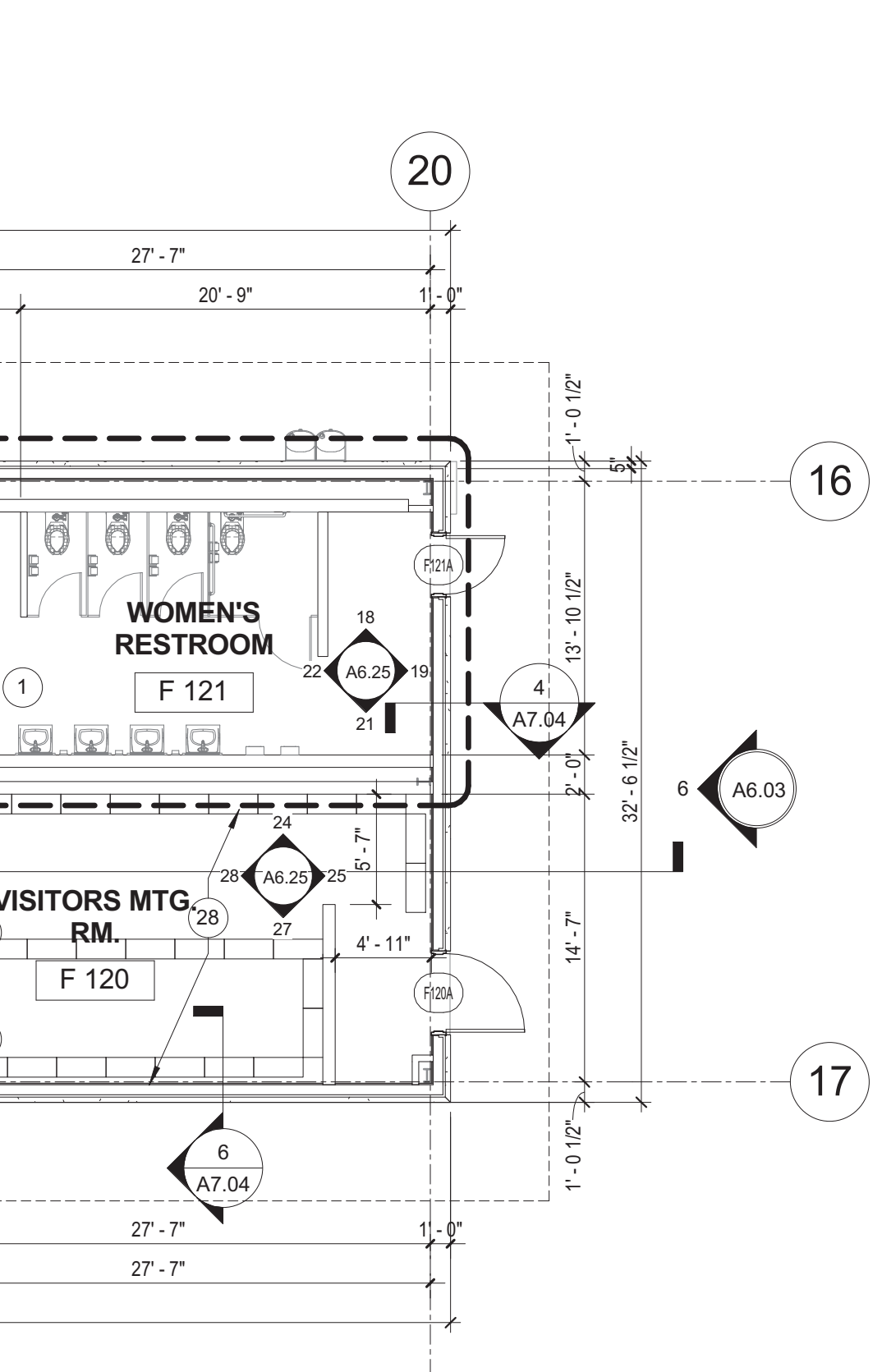
24 KEYNOTE LEGEND

1/4" = 1'-0"



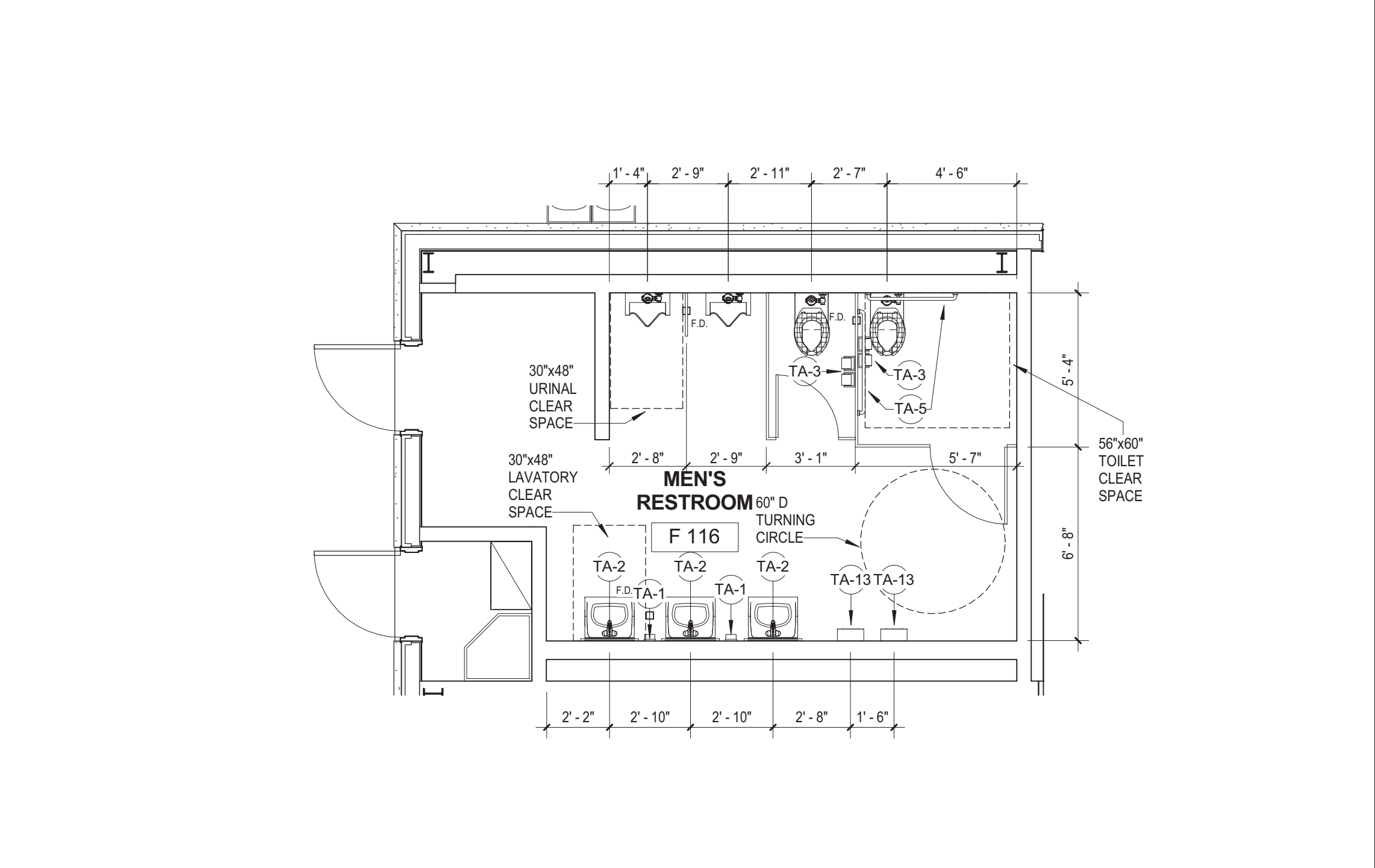
22 TOILET ACCESSORIES LEGEND

1/4" = 1'-0"



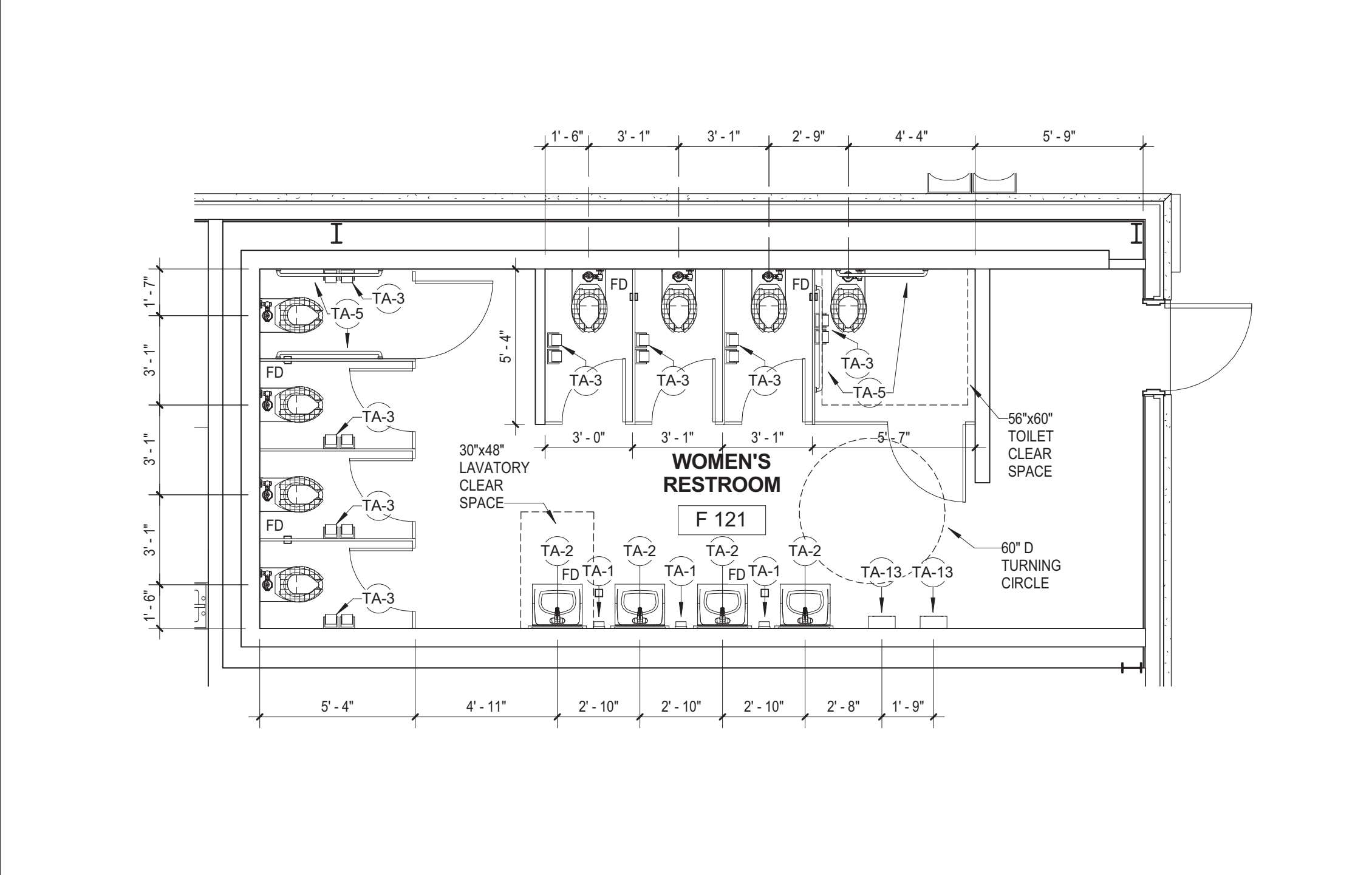
18 FIRST FLOOR PLAN AREA "F"

1/8" = 1'-0"



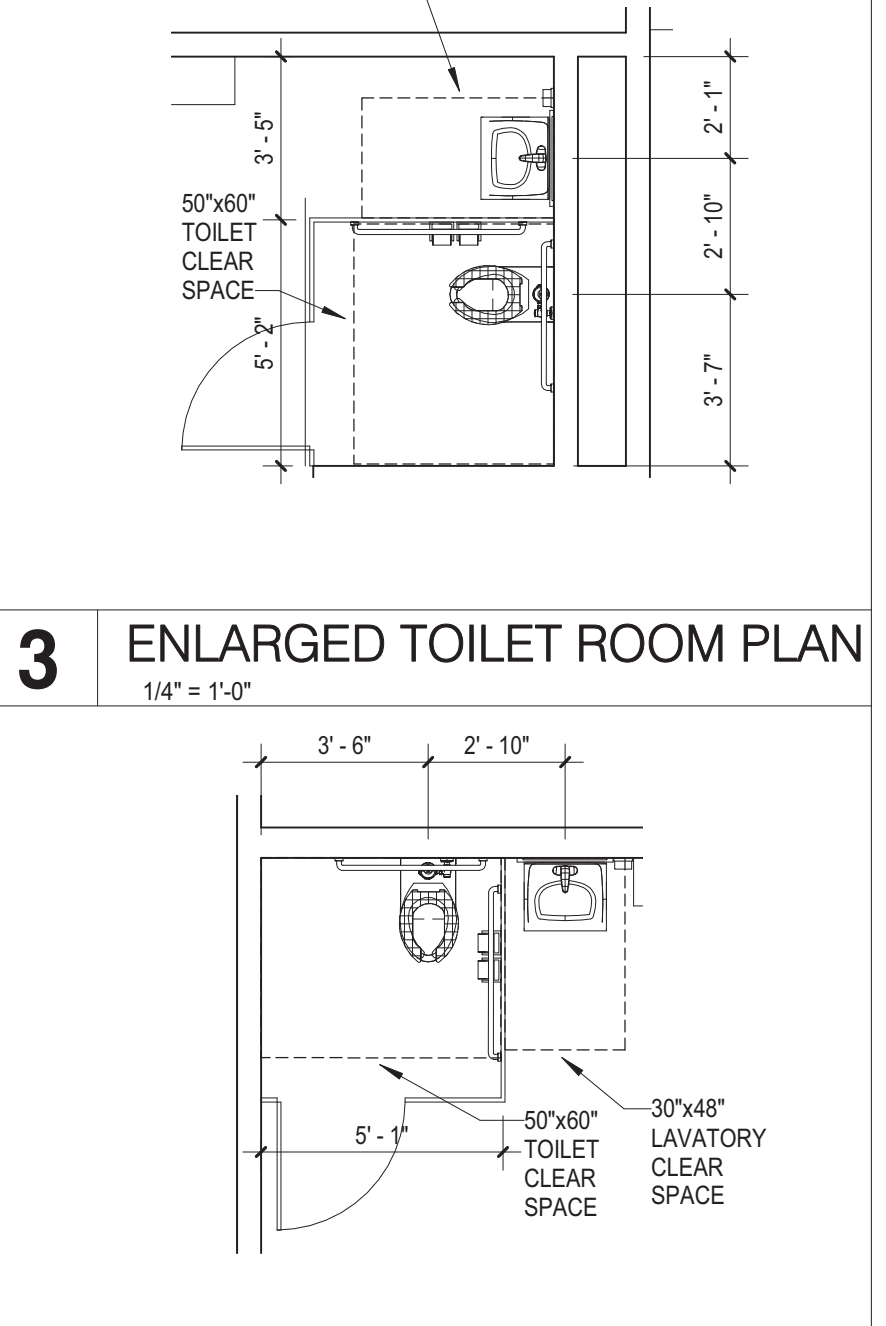
14 FIELDHOUSE REFLECTED CEILING PLAN

1/8" = 1'-0"



3 ENLARGED TOILET ROOM PLAN

1/4" = 1'-0"



CEILING MATERIALS LEGEND

APC TYPE A - 2' x 2' ACOUSTIC PANEL RE: FINISH SCHEDULE	1'x4' STRIP LIGHT FIXTURE
OPEN TO STRUCTURE	2'x2' RECESSED LIGHT
GWB - GYPSUM BOARD RE: FINISH SCHEDULE	ACCESS PANEL
PS - CEMENT PLASTER SYSTEM RE: FINISH SCHEDULE	SUPPLY AIR RE: MECH
2'x4' RECESSED LIGHT FIXTURE	SUSPENDED LIGHT FIXTURE
1'x4' RECESSED LIGHT FIXTURE	RETURN AIR RE: MECH
RECESSED CAN LIGHT FIXTURE	METAL SOFFIT

6 ENLARGED TOILET ROOM PLAN

1/4" = 1'-0"

Author

4 ENLARGED TOILET ROOM PLAN

1/4" = 1'-0"

Author

2 ENLARGED TOILET ROOM PLAN

1/4" = 1'-0"

Author

1 MATERIAL LEGEND.

1/8" = 1'-0"

Author