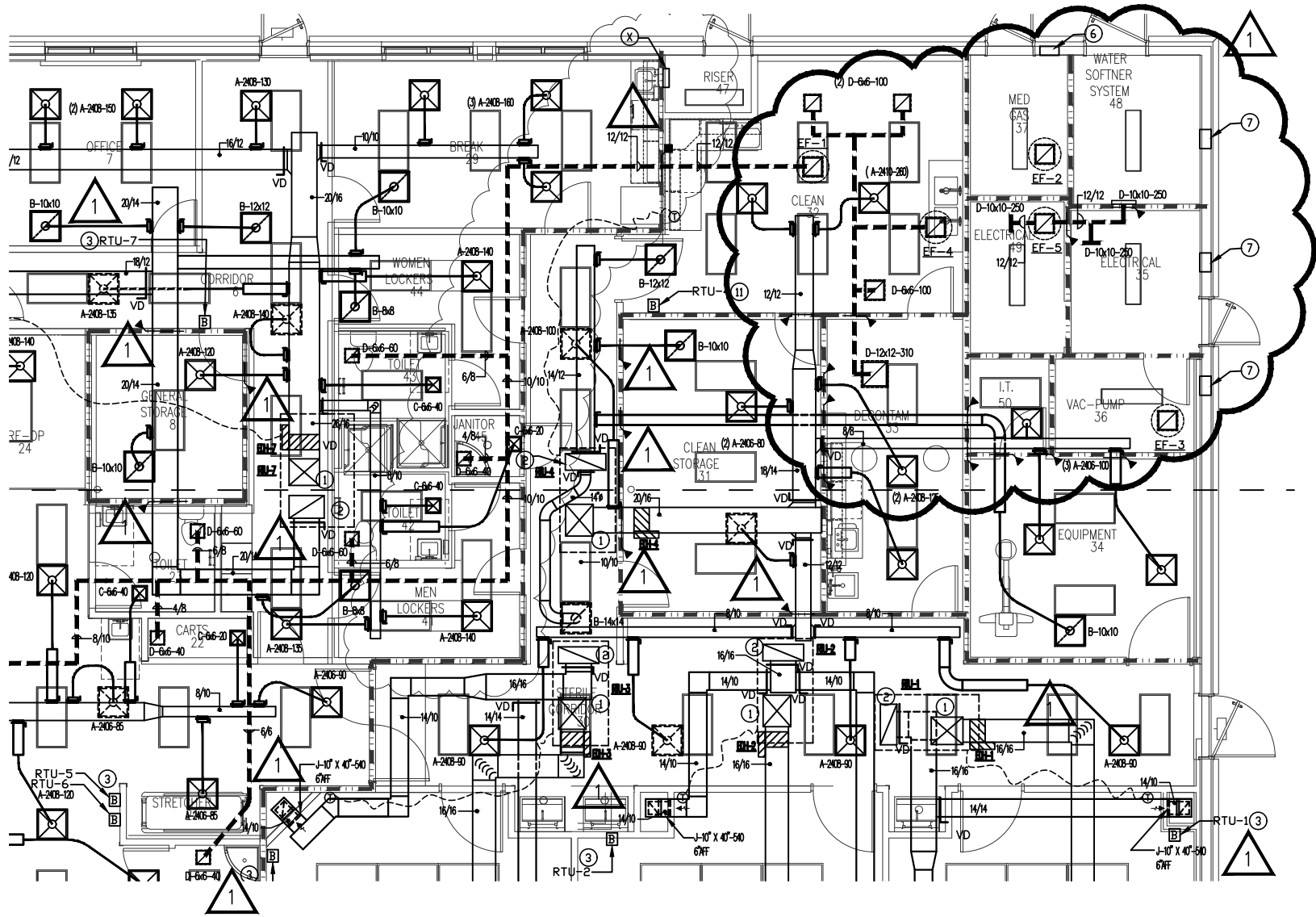


**ADDENDUM #1**

**(ATTACHMENT #MEP3)**

Dr. BELL ASC  
 REFERS TO SHEET MEP-3  
 MEC ASSOCIATES, INC.

HOUSTON, TX  
 N.T.S.  
 04-27-18



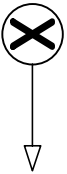
**ADDENDUM #1**

**(ATTACHMENT #M1a)**

Dr. BELL ASC  
 REFERS TO SHEET M-1  
 MEC ASSOCIATES, INC.

HOUSTON, TX  
 N.T.S.  
 04-27-18

KEY NOTE:



1. FROM FULL SIZE OPENINGS OF UNIT EXTEND S/A DOWN AND TRANSITION IN THE VERTICAL RISE OF DUCT TO SIZE SHOWN ON PLAN.
2. FROM FULL SIZE OPENINGS OF UNIT EXTEND R/A DOWN AND TRANSITION IN THE VERTICAL RISE OF DUCT TO SIZE SHOWN ON PLAN.
3. PROVIDE SHUT-OFF (SWITCH OR BUTTON) INTEGRATED WITH THE CONTROLS SYSTEM TO SHUT DOWN RTU IN THIS ZONE. THIS SHALL NOT BE AN ELECTRIC DISCONNECT, BUT AN INTERFACE WITH CONTROL LOW VOLTAGE WIRING THAT DISRUPTS SYSTEMS OPERATION. THERMOSTATS ARE NOT ACCEPTABLE.
4. ROUTING OF DUCT WORK IS DIAGRAMMATIC. BEFORE FABRICATING DUCT CONFIRM THAT IT WILL NOT CONFLICT WITH, STRUCTURAL, O.R. EXAM LTS SUPPORTS AND MEDICAL EQUIPMENT.
5. PROVIDE 30"x54"x18" R/A PLENUM BOX FOR R/A GRILLES.
6. PROVIDE TWO(2) E-12X12 O/A INTAKE LOUVER IN WALL: (1) 6" AFF AND (1) 6" BELOW FINISH CEILING.
7. PROVIDE ONE(1) E-18X18 O/A INTAKE LOUVER IN WALL 12" AFF.
8. PROVIDE 3KW ELECTRIC UNIT HEATER, 480V 1Ø 60HZ, 300 CFM. SUSPEND UNIT HEATER FROM STRUCTURE, INSTALL PER MANUFACTURER'S INSTRUCTIONS AND INDUSTRY STANDARDS. UNIT HEATER SHALL BE REZNOR EGEB SERIES OR EQUAL. PROVIDE UNIT MOUNTED STATS.

**ADDENDUM #1**

**(ATTACHMENT #M1b)**

Dr. BELL ASC  
REFERS TO SHEET M-1  
MEC ASSOCIATES, INC.

HOUSTON, TX  
N.T.S.  
04-27-18

## EXHAUST FANS

DESIGNATION	EF-1	EF-2	EF-3	EF-4	EF-5
SERVES	GENERAL	MED GAS	VAC PUMP	STERILE	ELEC
LOCATION	ROOF	ROOF	ROOF	ROOF	ROOF
CFM	730	200	600	610	750
EXT. S.P.	.5	.125	.3	.25	.25
MOTOR RPM	1725	1725	1725	1725	1725
FAN RPM	1479	969	1368	1169	1188
HORSE POWER	1/4	1/10	1/6	1/4	1/4
VOLTT./PH./Hz	120/1/60	120/1/60	120/1/60	120/1/60	120/1/60
MANUFACTURER	GREENHECK	GREENHECK	GREENHECK	GREENHECK	GREENHECK
MODEL #	CUE-099-VG	CUE-85-VG	CUE-095-VG	CUE-099-VG	CUE-101-VG

NOTES:

1. PROVIDE EXHAUST FANS WITH MOTORIZED DAMPER, BIRD SCREEN AND ROOF CURB. .
2. EXHAUST FAN SHALL BE UP-BLAST.
3. EXHAUST FAN SHALL RUN CONTINUALLY.



ADDENDUM #1

(ATTACHMENT #M3a)

Dr. BELL ASC  
 REFERS TO SHEET M-3  
 MEC ASSOCIATES, INC.

HOUSTON, TX  
 N.T.S.  
 04-27-18

HVAC SYSTEM CONTROL SCOPE:

1. M.C. SHALL CONFIRM ALL CONTROL SYSTEM DEVICES EQUIPMENT AND ETC PROVIDED BY AADN AND/OR RECOMMENDED BY AADN FOR CONTROL RTU-1,2,3,4,5 & 6. PROVIDE/INSTALL ALL ESSENTIALS NEEDED TO MAKE THESE UNITS OPERATE AS NOTED BELOW:
  - a. BE USER FRIENDLY SUCH THAT FACILITIES STAFF CAN ADJUST CONDITIONS IN THE ROOMS FROM STAS LOCATED WITH-IN THEM. CONTROLS SHALL BE EQUAL TO THE TOUCH SCREEN CONTROL AS MANUFACTURER BY AADN.
  - b. MODULATE DIGITAL COMPRESSOR AND HOT GAS REHEAT AS REQUIRED TO CONTROL TEMPERATURE AND HUMIDITY IN ALL ZONES.
  - c. MONITOR GAUGE OF STATIC RESISTANTS OF 90% FILTER AND AIR FLOW IN DUCT THEN ADJUST VFD'S TO RESPOND TO STATIC INCREASE OR DECREASE OF FILTER, AS REQUIRED TO MAINTAIN CONSTANT CFM AIR FLOW.
  - e. MODULATE MOTORIZED D/A DAMPER, TO OPEN WHEN RTU OPERATES AND CLOSE WHEN IT IS OFF.
  - f. ENGAGE ECONOMIZER SYSTEM WHEN ENTHALPY GAUGE INDICATES AMBIENT CONDITIONS ARE WITHIN SET-POINT..
2. PROVIDE MANUFACTURER RECOMMENDED PROGRAMMABLE THERMOSTATS FOR TEMPMASER UNITS RTU-7 & 8. THERMOSTATS TO BE COMPATIBLE WITH ECONOMIZERS SYSTEMS PROVIDED WITH UNITS.
3. M.C. AND/OR HIS CONTROLS CONTRACTOR SHALL PROVIDE AND INSTALL:
  - a. ALL WIRING & CONDUIT FOR CONTROLS SYSTEMS; LOW VOLTAGE AND 120V SYSTEMS.
  - b. AADN SUPPLIED VFD'S FOR RAHU-1 2,3,4,5 & 6.
  - c. ALL RELAY'S, CONTACTORS, OR ANY COMPONENT ESSENTIAL FOR INTEGRATING THE HVAC CONTROLS AND MAKING THEM FULLY OPERATIONAL.
  - d. AADN SUPPLIED ROOM TEMPERATURE AND HUMIDITY SENSORS, AND CONTROLS THAT ARE USER FRIENDLY. DEVICES IN O.R. ROOMS AND RECOVERY ROOM SHALL DISPLAY TEMPERATURE AND HUMIDITY LEVEL.
  - e. AT LOCATIONS SHOWN ON DRAWINGS PROVIDE A SHUT-OFF (SWITCH, OR BUTTON) INTEGRATED WITH CONTROLS SYSTEM TO SHUT DOWN EACH UNIT. THIS IS NOT A ELECTRICAL DISCONNECT, BUT AN INTERFACE IN THE CONTROL LOW VOLTAGE WIRING THAT DISRUPTS UNIT OPERATION. THERMOSTATS ARE NOT ACCEPTABLE.

**ADDENDUM #1****(ATTACHMENT #M3b)**

Dr. BELL ASC  
 REFERS TO SHEET M-3  
 MEC ASSOCIATES, INC.

HOUSTON, TX  
 N.T.S.  
 04-27-18