

# **DABHI ENGINEERING ASSOCIATES INC.**

19310 Kessington Lane; Houston, Texas 77094

TEL (281) 492-6885; FAX (281) 492-8626

AT&T–Huntsville C.O

Replacement of the existing AHU-1 Phase-2

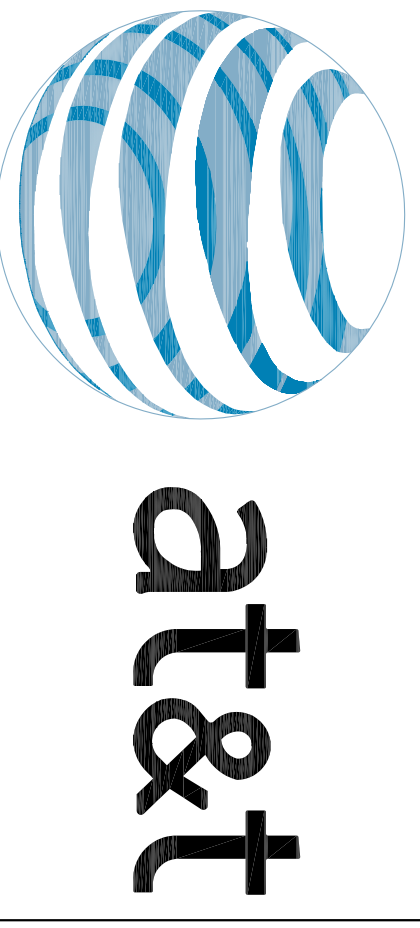
## **ADDENDUM #1 (01/17/2019)**

Addendum #1 consists of the following comments/revisions to the bid drawings. Addendum #1 in its entirety shall be incorporated into contractors' bids:

1. Find the attached revised electrical DWG. E1.01 and E1.03.
2. Fire Alarm system shall be furnished, installed, programmed, tested, and placed in normal working conditions as per requirements of bid DWG. E1.01. New VFD shall be programmed for AHU shut down by VFD mfr. All commissioning shall be witnessed by AT&T's bldg. manager and BECK.

END





CORPORATE REAL ESTATE

**AT&T Huntsville**  
Central Office  
1014 13TH STREET  
Huntsville, Tx 77340

Project Manager:

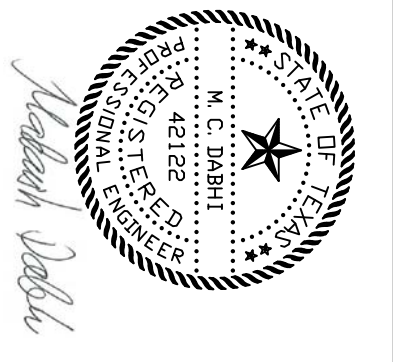


MUNOZ & COMPANY  
1017 NORTH PARKS WILLETTS ROAD  
HOUSTON, TEXAS 77058  
WWW.MUNOZ.CO.COM

MEP Engineer

**DABHI ENGINEERING ASSOC INC.**  
19310 KESSINGTON LANE  
HOUSTON, TEXAS 77094  
281.492.6885 FAX: 281.492.8626  
CONTACT: MADARSINH DABHI

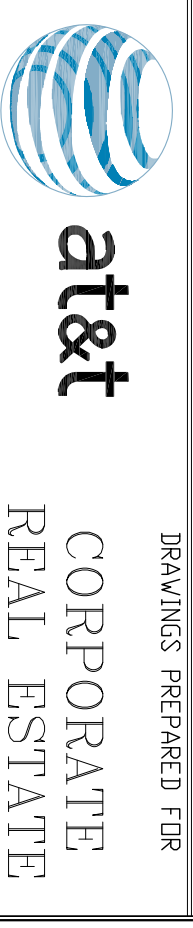
CONSULTANT STAMP



REVIEWS / AUTHORIZATIONS

NO	REVISION / AUTHORIZATION	DATE	BY
1	ISSUED FOR PRICING AND CONSTRUCTION	1/10/19	MJD
2	ADDENDUM #1-ELEC REVISIONS	1/17/19	MJD

PROPRIETARY AT&T INFORMATION  
NOT FOR GENERAL USE OR DISCLOSURE OUTSIDE OF AT&T  
THIS INFORMATION MAY ONLY BE USED BY AUTHORIZED  
PERSONNEL OF THE LOCAL GOVERNMENT AGENCY IN CONNECTION  
WITH THE CONSTRUCTION OF THE PROJECT AND SHALL NOT BE  
REPRODUCED, COPIED, OR TRANSMITTED IN ANY FORM OR  
BY ANY MEANS, ELECTRONIC OR MECHANICAL, INCLUDING  
PHOTOCOPYING, RECORDING, OR BY ANY INFORMATION  
SYSTEMS, WITHOUT PERMISSION IN WRITING FROM  
AT&T INTELLECTUAL PROPERTY DEPARTMENT

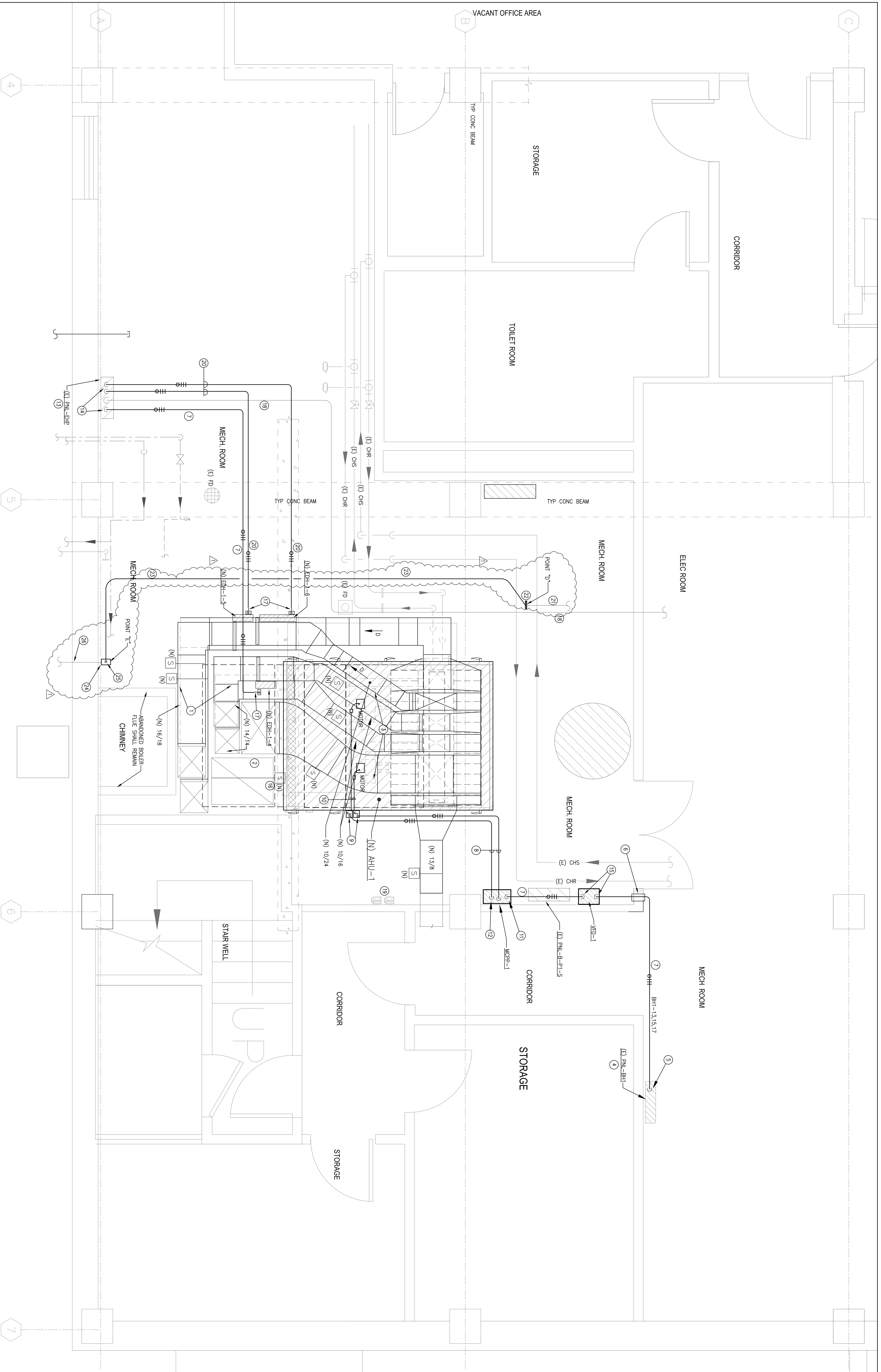


PROJECT TITLE  
**AT&T HUNTSVILLE CENTRAL OFFICE**  
REPLACEMENT OF AHU-1

1014 13th Street  
Huntsville, 77340  
TX US

SHEET TITLE  
BSMT FLR MECHANICAL ROOM-ELECTRICAL  
WL8412

AT&T PROJECT NUMBER	DATE	SCALE	NOTED
122251	1/10/2019	AS SHOWN	
SHEET NO.	BY	DATE	BY
11	SD	1/17/19	MJD
SHEETS	OF	SHEETS	SHEET NO.
11	11	11	E1.03



**PARTIAL BSMT FLR-MECH ROOM**  
**ELECTRICAL RENOVATION PLAN**  
SCALE: 1/2" = 1'-0"

- PLAN AND SECTION KEYNOTES:**
- (1) 3/4 DUCTS, REF MECH RENOV DWG.
  - (2) (N) PA DUCT UP IN CHASE, REF MECH RENOV DWG.
  - (3) FAN SECTION WITH (2) PLUG FANS.
  - (4) (E) PNL BOARD IS 240 VOLT, 3 PH, 4 WIRES, SHORT CIRK BATING 14 KA, 225 AMP MFC, INSTALL (1), (N) 30 AMP, 3 POLE, OLE CIR IN EMPT SPACES TO SERVE (N) AHU-1.
  - (5) (N) CONDUIT WITH WIRES ON TO TOP OF PNL BOARD, CONN PH WIRES TO LOAD SIDE OF (N) CB TO SERVE (N) AHU-1.
  - (6) CORE DRILL (E) MASONRY WALL FOR INSTALLATION OF (N) CONDUIT.
  - (7) 1/2 CONDUIT WITH (3), #10 PH AND (1), #10 GND WIRES.
  - (8) 1/2 CONDUIT WITH (3), #12 PH AND (1), #12 GND WIRES.
  - (9) CONDUIT WITH WIRES ON TO AHU CASING INSTALLED J-BOX.
  - (10) 1/2 LIQUID-TIGHT CONDUIT WITH (3), #12 PH AND (1), #12 GND WIRES INSIDE FAN COMPARTMENT.
  - (11) CONDUIT WITH WIRES ON TO MCRP-1, CONN PH WIRES TO INPUT TERMINALS.
  - (12) CONDUIT WITH WIRES ON TO MCRP-1, CONN 2 SETS OF PH WIRES TO OUTPUT TERMINALS OF MCRP TO SERVE FAN MOTORS.
  - (13) (E) PNL BOARD IS 240 VOLT, 3 PH, 4 WIRES, 400 AMP, MLO, GLE (2), (E), 40A, 3 POLE DIS SERVING (E) EDH SHALL BE ASSIGNED TO SERVE (N) EDH-5 AND 6, (1), (E), 30 AMP, 3 POLES, SPARE CB SHALL BE ASSIGNED TO SERVE (N) EDH-4. CONDUIT WITH WIRES ON TO PNL BOARD, CONN PHASE WIRES TO LOAD SIDE OF ASSIGNED (E) CB TO SERVE (N) EDH(5).
  - (14) CONDUIT WITH WIRES ON TO TOP OF VFD, CONN PH WIRES TO LINE AND LOAD SIDE OF VFD.
  - (15) INSTALL THE DETECTOR IN (N) 36/30 PA DUCT.
  - (16) 1/2 CONDUIT WITH CONDUCTORS TO DS OF EDH.
  - (17) 1/2 CONDUIT WITH CONDUCTORS TO DS OF EDH.
  - (18) (E) ABANDONED DISCONNECT SWITCHES AND ASSOC WIRES SHALL REMAIN.
  - (19) (E) ABANDONED DISCONNECT SWITCHES AND ASSOC WIRES SHALL REMAIN.
  - (20) 1/2 CONDUIT WITH (3), #8 PH AND (1), #10 GND WIRES.
  - (21) (E) 1/2 CONDUIT WITH (N) SPECIFIED WIRES TO (E) 225A, 3 P CB IN (E) SP-2.
  - (22) CONN (N) CONDUIT TO (E) CONDUIT WITH REQUIRED FITTINGS.
  - (23) (N) 2" CONDUIT WITH (E) PH, 1 NEUTRAL, 1 #8 GND WIRES EXACT LOCATIONS AND ELEV SHALL BE FIELD CORROBORATED WITH (E) UTILITIES TO AVOID CONFLICTS BEFORE INSTALLATION.
  - (24) INSTALL (N) 12"x12"x8" DEEP SPACE W/W WALL, FIELD DETERMINE EXACT LOCATION AND SECURE TO THE WALL.
  - (25) (N) CONDUIT WITH WIRES ON TO W.W. SPACE (N) WIRES TO (E) WIRES IN THE SPACE W/W.
  - (26) (E) CONDUIT WITH WIRES SHALL REMAIN.

**GENERAL NOTES:**

- (N) VFD AND MCRP-1 SHALL BE INSTALLED ON WALL USING DUAL STL UNISTRIPS AND REQUIRED HARDWARE AT REQUIRED ADA HEIGHTS.
- EXACT LOCATIONS AND ELEV OF (N) CONDUITS SHALL BE FIELD CORROBORATED WITH DUCT WORK, PIPING, STRIPS, CONDS, LIGHTING, AND EXHA COSTS.
- ALL (E) UTILITY LINES BEFORE INSTALLATION TO AVOID CONFLICTS, FURNISH AND INSTALL REQUIRED JUNCTION AND PULL BOXES AT NO EXTRA COSTS.
- FINAL CONNECTIONS TO (N) AHU MOTORS, EDH(S), VFD, MCRP-1, ETC SHALL BE MADE AS PER MANUFACTURER'S INSTRUCTIONS.
- CONDUIT TO EACH (N) EDH SHALL BE MADE USING FLEX CONDUIT ON SERVICE SIDE OF EDH DISCONNECT SWITCH.
- EXACT LOCATION AND ELEV OF AHU FAN WALL MOTORS SHALL BE FIELD OBTAINED AND ASSOC CHANGEST TO BRANCH CKT WIRING SHALL BE MADE AT NO EXTRA COSTS.
- LIQUID-TIGHT CONDUITS INSIDE AHU CASING, TO SERVE AHU MOTORS, SHALL BE SECURED TO CASING WITH S.S CLAMP, OPENING AROUND CLAMP SHALL BE SEALED OFF AIR-TIGHT.
- (N) GND WIRES OF (N) BRANCH CKTS SHALL BE CONNECTED TO GND BUSS OF EQUIP AND (E) PNL BOARD WITH CU GROUNDING CLAMP.
- ALL WALL AND FAN OPENING AROUND CONDUITS SHALL BE SEALED OFF, FIRE STOPPED, USING UL LISTED HULLI SEALANTS.
- (N) DUCT DETECTORS SHALL BE INSTALLED IN STRAIGHT SECTIONS OF DUCTS AND EXACT LOCATIONS SHALL BE FIELD CORROBORATED WITH MANUAL, VOLUME DRAWERS AND EDH DUCT DETECTORS SHALL BE INSTALLED AT FACTORY RECOMMENDED DISTANCE FROM EDH.