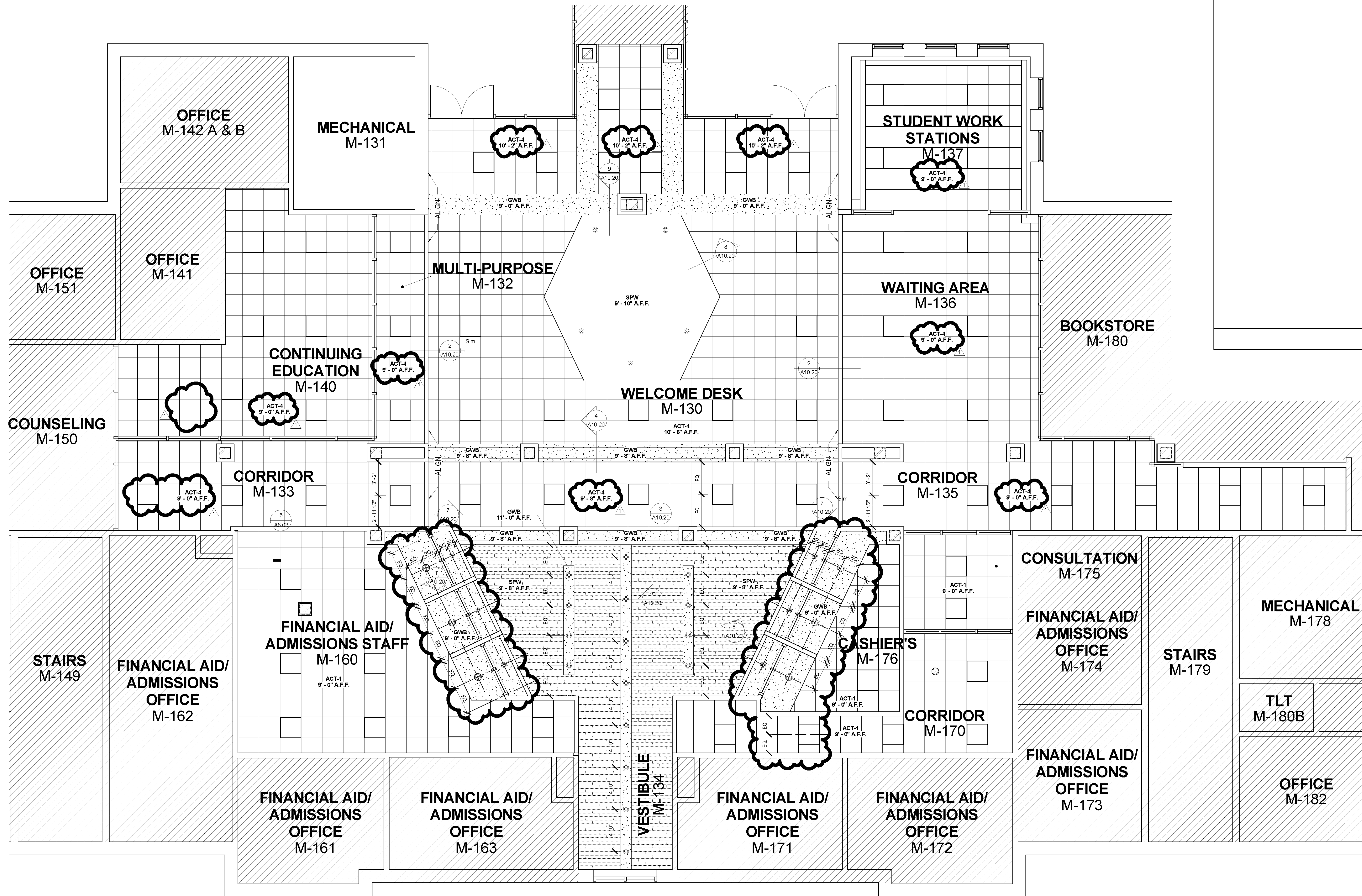


CLIENT GALVESTON COLLEGE		
PROJECT NUMBER 19103		
DATE	April 15, 2019	
REVISIONS		
No.	Description	Date
1	ADDENDUM 1	04/24/19

ISSUE FOR BID
COMPOSITE RCP - FIRST FLOOR

A1.11



CHECKED BY: Checker

AUTHOR

DRAWN BY:

C:\Users\acoury\Documents\19103_GC Moody Hall - Student Services Renov_A11_coury.rvt
 4/25/2019 7:15:57 PM

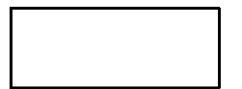
GENERAL NOTES


1. PRIOR TO INSTALLATION OF EQUIPMENT AND DIFFUSERS, VERIFY MANUFACTURERS RECOMMENDED AND CODE REQUIRED CLEARANCES ARE AVAILABLE.
2. COORDINATE ALL WORK WITH ALL OTHER TRADES AND DISCIPLINES.

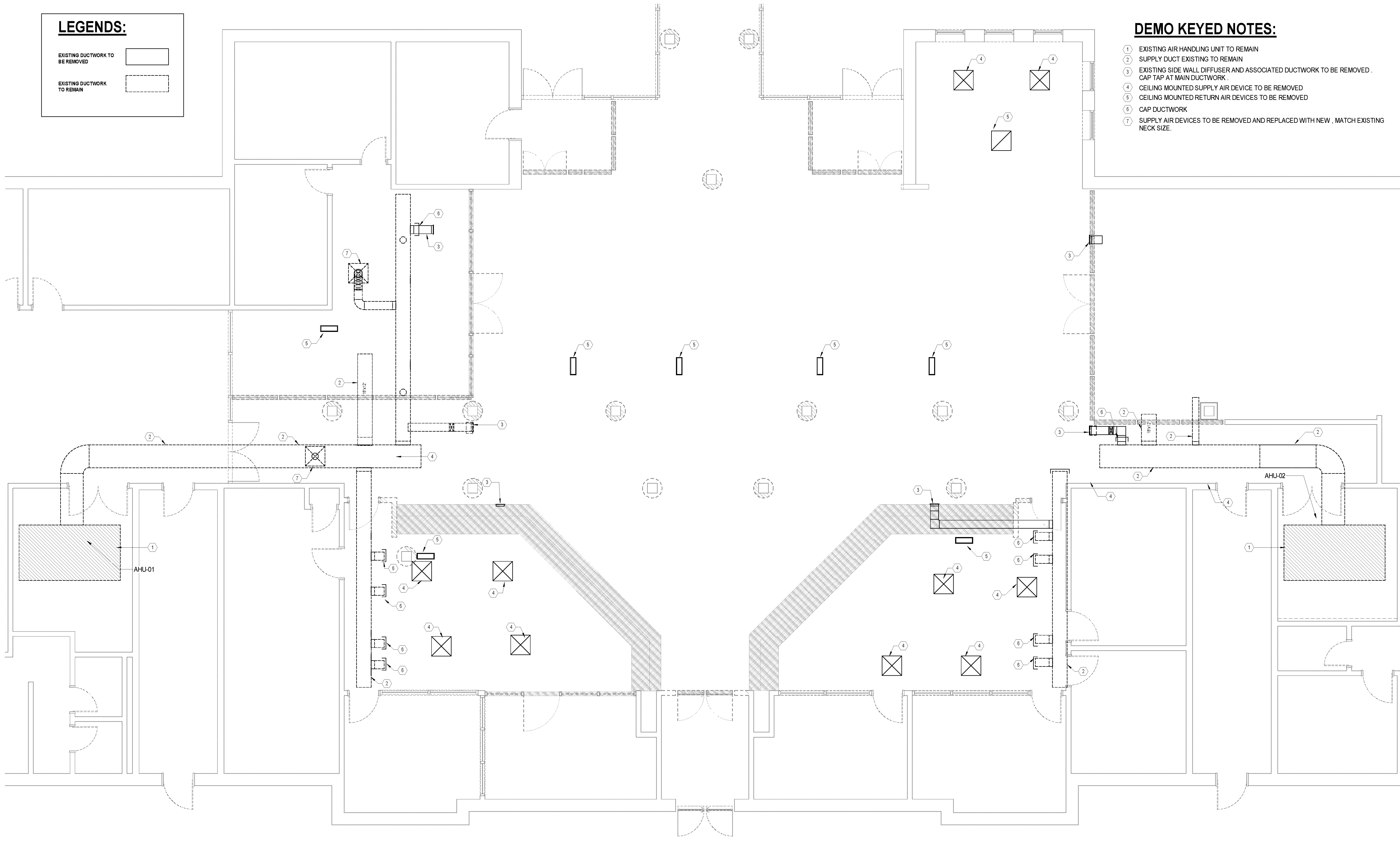
DEMO KEYED NOTES:

- 1 EXISTING AIR HANDLING UNIT TO REMAIN
- 2 SUPPLY DUCT EXISTING TO REMAIN
- 3 EXISTING SIDE WALL DIFFUSER AND ASSOCIATED DUCTWORK TO BE REMOVED. CAP TAP AT MAIN DUCTWORK.
- 4 CEILING MOUNTED SUPPLY AIR DEVICE TO BE REMOVED
- 5 CEILING MOUNTED RETURN AIR DEVICES TO BE REMOVED
- 6 CAP DUCTWORK
- 7 SUPPLY AIR DEVICES TO BE REMOVED AND REPLACED WITH NEW, MATCH EXISTING NECK SIZE.

LEGENDS:

EXISTING DUCTWORK TO BE REMOVED 


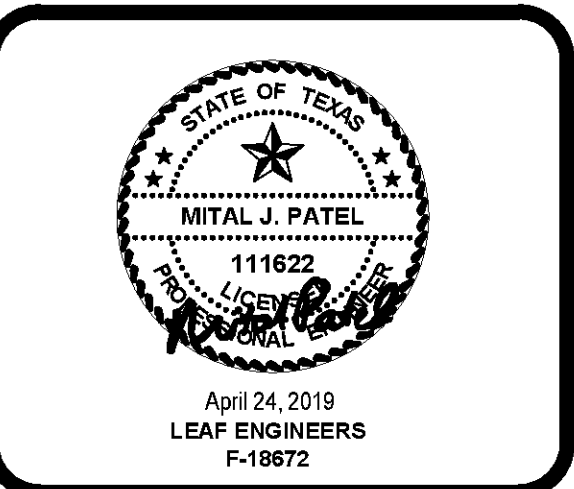
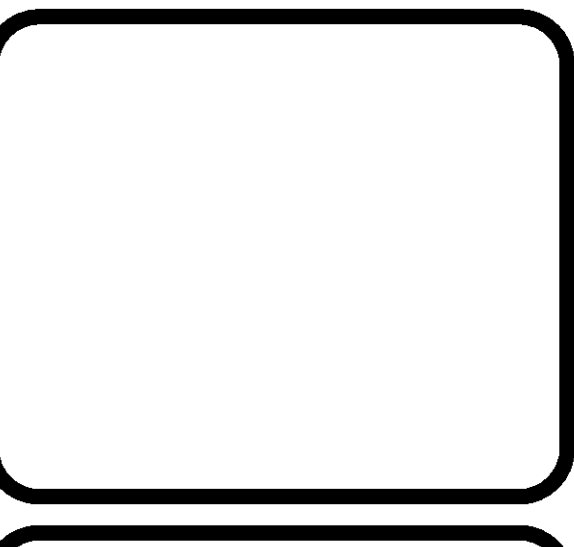
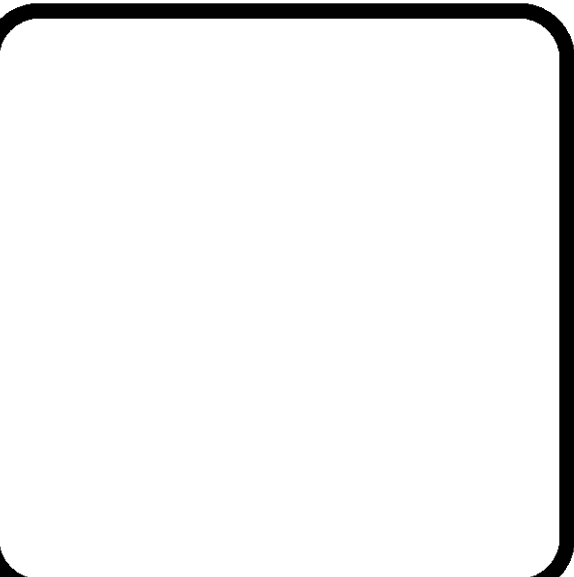
EXISTING DUCTWORK TO REMAIN 



**MOODY HALL
 STUDENT SERVICES RENOVATION**

4015 AVENUE Q
 GALVESTON, TX 77550

ISSUE FOR BID

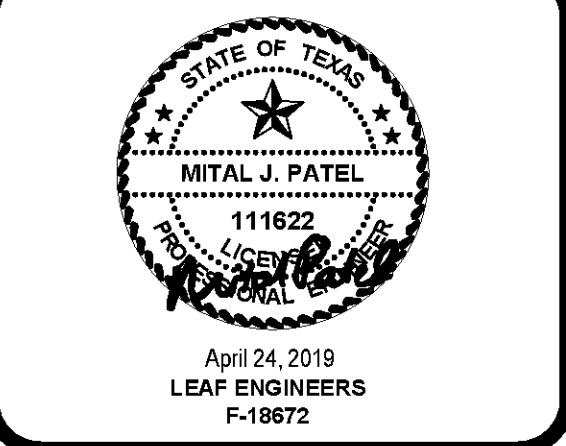
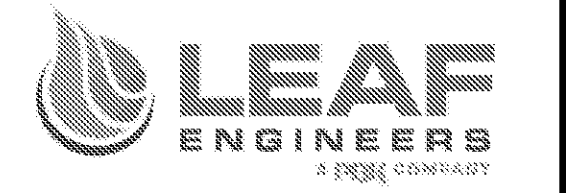
CLIENT GALVESTON COLLEGE		
PROJECT NUMBER 19103		
DATE April 24, 2019		
REVISIONS		
No.	Description	Date
1	ADDENDUM-1	04/24/2019

ISSUE FOR BID
MECHANICAL FIRST FLOOR-DEMO

MD2.01



4015 AVENUE Q
 GALVESTON, TX 77550
 ISSUE FOR BID



CLIENT GALVESTON COLLEGE		
PROJECT NUMBER 19103		
DATE April 24, 2019		
REVISIONS		
No.	Description	Date
1	ADDENDUM-1	04/24/2019

ISSUE FOR BID
MECHANICAL FIRST FLOOR

M2.01

GENERAL NOTES

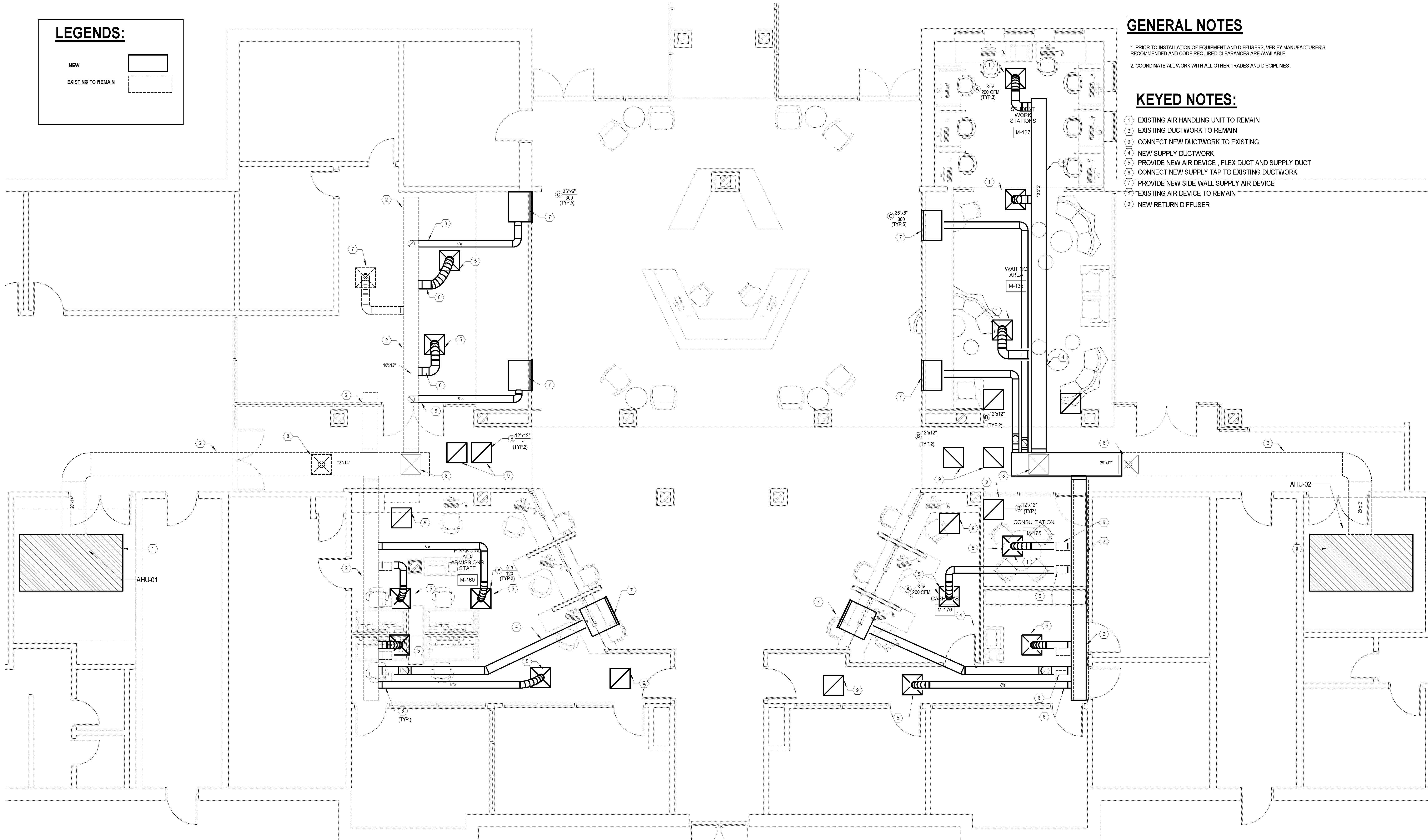
1. PRIOR TO INSTALLATION OF EQUIPMENT AND DIFFUSERS, VERIFY MANUFACTURER'S RECOMMENDED AND CODE REQUIRED CLEARANCES ARE AVAILABLE.
2. COORDINATE ALL WORK WITH ALL OTHER TRADES AND DISCIPLINES.

KEYED NOTES:

- 1 EXISTING AIR HANDLING UNIT TO REMAIN
- 2 EXISTING DUCTWORK TO REMAIN
- 3 CONNECT NEW DUCTWORK TO EXISTING
- 4 NEW SUPPLY DUCTWORK
- 5 PROVIDE NEW AIR DEVICE, FLEX DUCT AND SUPPLY DUCT
- 6 CONNECT NEW SUPPLY TAP TO EXISTING DUCTWORK
- 7 PROVIDE NEW SIDE WALL SUPPLY AIR DEVICE
- 8 EXISTING AIR DEVICE TO REMAIN
- 9 NEW RETURN DIFFUSER

LEGENDS:

- NEW
- EXISTING TO REMAIN



C:\Users\mthabeb\Documents\19103_Galveston College - Student Services Renovat\moody hall_MIEPT17_rn\mthabeb.rvt
 4/25/2019 10:49:32 AM

CHECKED BY: Checker

DRAWN BY: Author